


<p>المادة: علم الاجتماع الشهادة: الثانوية العامة الفرع: الاجتماع والاقتصاد نموذج رقم 2018 /3 المدة : ثلاث ساعات</p>	<p>الهيئة الأكاديمية المشتركة قسم الاجتماع والاقتصاد</p>	 <p>المركز التربوي للبحوث والإنماء</p>
---	--	---

نموذج مسابقة (يراعي تعليق الدروس والتوصيف المعدل للعام الدراسي 2016 – 2017 وحتى صدور المناهج المطورة)

Part 1: Obligatory Set- Using Concepts and Techniques (8 pts.)

1.	<p>Classify the following criteria within two groups, specifying the form of society:</p> <p>a. The existence of a pressured agricultural sector b. Technical and technological development c. Population increase d. The expansion of social services e. The investment of young energies</p>	1
2.	<p>Name the appropriate method for each of the following researches, stating the basic characteristic for each method.</p> <p>a. The traditions and rituals of weddings within Lebanese families in old times b. A study on the percentage of the usage of modern means of communication for direct communication between parents and friends in Lebanese society c. To study the extent to which the use of smart tablets in the development of education in Lebanon and make it more an interactive education.</p>	1.50
3.	<p>Affirm the truth of each of the following sentences .</p> <p>a. Voluntary social work in modern societies is based on individual initiative. b. Local values reinforce social cohesion and create a harmonious society. c. The concept of citizenship is based on building the social contract between citizens and strengthening organic solidarity.</p>	1.50
4.	<p>Show the relationship between the following elements presenting an example illustrating this relationship in each set.</p> <p>The geographical space and social relations. a. The development of socio-economic systems and social stratification.</p>	1.50
5.	<p>The Lebanese community is witnessing the spread of phenomenon of violence and family crime where the number of victims of domestic violence is increasing. <u>As a student in the socio-economic branch, you are asked to participate in social research on this phenomenon to show the circumstances that lead to violence in order to learn about:</u></p> <ul style="list-style-type: none"> • Its impact on society and how to reduce it. • Family conditions for families whose members are subjected to domestic violence. <p>a. Formulate a question with three alternatives for the families of the victims in order to find out the causes of the spread of this phenomenon. (0.75 pt.)</p> <p>b. <u>Formulate a question to each of the following ideas addressed to a social expert, in order to know:</u></p> <ul style="list-style-type: none"> • The implications of the spread of this phenomenon on the society. • How to reduce them (1 pt.) 	2.50

	<p>c. Identify the type of sample required to conduct this research that targets victims of domestic violence and crime, justifying your choice (0.75 pt.)</p>	
--	---	--

Part 2: Optional Set- First choice set- Analyzing Documents (12 pts.)

Document 1:

There are social barriers to social change that are clearly visible in traditional societies. The most important of these social obstacles are traditional culture, where social change is largely related to the prevailing culture of society. Thus, traditional culture based on customs, traditions and values in general does not facilitate the process of social change. This is particularly prevalent among older people who have lived in different situations.

It was also found that the disruption of the role of women in society would impede the process of social change. In societies with traditional culture, women's illiteracy rate is more than 90%, which limits the effectiveness of women and leads to their marginalization in the development process.

The rigid system of social classes also impairs the process of social change, because interaction is limited by class closure. Such a system determines the type of profession individuals must follow and move with. Class cohesion is an impediment to the social mobility process that is prevalent in today's developing societies.

Source: <https://crimedz.Logspot.co> مفهوم عوامل التغيير الاجتماعي

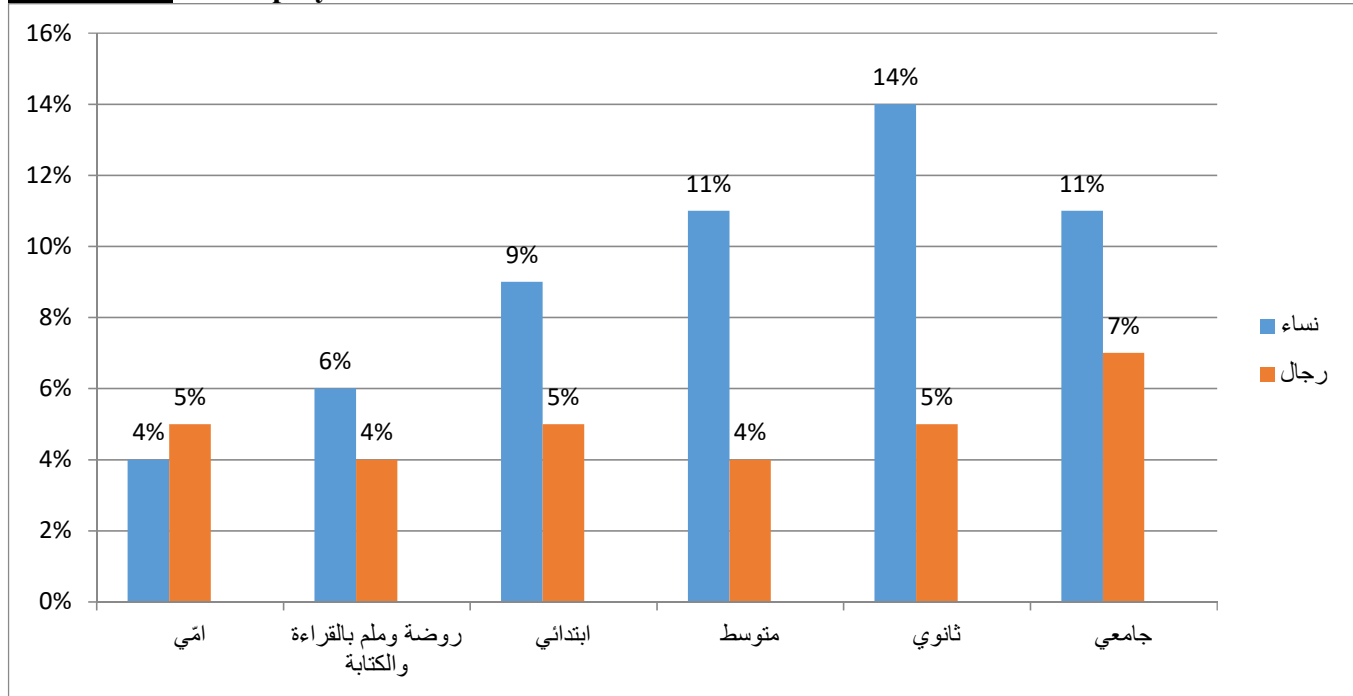
Document 2:

Oxfam, in its report on the 'Index of Commitment to Reduce Inequality' 2017, revealed that Lebanon scored a very poor performance, reaching tenth among 12 Arab countries included in the census and 131 globally. The Center earned 138% of expenditure on health, education and social protection, and 108 on labor market policies that deal with inequality. It was found that 52% of the workers in Lebanon are not officially recognized and their rights are not protected, and they do not enjoy any of the rights of employment such as medicine, education and compensation.

In Lebanon, too, 10% of children under the age of 15 work. Women earn less than their male counterparts in the same jobs, and hundreds of employees leave their jobs without the state moving. However, achieving this low rank is a natural summary for a country where the poor class exceeds 30% and 5% of the population has 95% of the wealth.

المصدر: " الفوارق الاجتماعية تترسخ في لبنان": 131 عالمياً، عزة الحاج حسن، المدن، 2017 / 7 / 27

Document 3: Unemployment Rates



المصدر: سوق العمل في لبنان، نسب البطالة نجوى يعقوب ولارا بدر، ادارة الاحصاء المركزي، العدد 1، 2011

Document 4:

Lebanon witnessed wars, security incidents and serious economic crises that caused a rise in the number of migrants. As for the characteristics of migrants, they appear to be distributed as follows: 32% of them in the age group (25-29 years) and 28% in the 30-34 age group, while the age pyramid in Lebanon, according to the Central Statistics Department, 38.1% of the Lebanese population, 82.6% are immigrants.

University students form the highest percentage of immigrants forming 46.3%, and the percentage is 1.6% for those with technical education. Professionals, those holding liberal professions and technicians are at the forefront of immigration, followed by executives and administrators. The overall proportion of those planning to emigrate was 35%, according to a survey conducted by "الدولية للمعلومات" on migration.

المصدر: جريدة السفير، 9 كانون الأول 2014.

By referring to the 4 given documents, answer the following questions:

1.	a. Extract from document 1, two of the reasons that hinder the process of social change. (0.5 pt.)	1
	b. Show The effect of culture on social change (0.5 pt.)	
2.	<u>By referring to document 2:</u>	1.50
	a. Deduce two of the measures of social inequality in its socio-economic dimension. (1 pt.) b. Specify the location of Lebanon in the path of social change, and then support your answer with evidence. (0.5 pt.)	
3.	<u>By referring to document 3:</u> a. Deduce the prominent concept in the document and then support your answer with evidence. (0.75 pt.).	2.25

	b. Show the effect of the educational level on unemployment in Lebanon for both sexes, and then extract 2 appropriate proofs. (1.50 pts.)	
4.	a. Name the type of change and form of mobility to which document 4 refers to and confirm your answer with a proof for each. (1 pt.) b. Identify the three categories targeted by the problem presented in the document, and then show their reflection on Lebanese society. (1 pt.)	2
5.	Show, through documents 1, 2 and 3, the 2 missing conditions of integration, which prevent the path of process of change from emerging. (0.50 pt.)	0.50
6.	Show the relationship between document 3 on the one hand and document 4 on the other hand. (0.50 pt.)	0.50
7.	The above documents present social problems affecting Lebanese people in general and Lebanese youth in particular, which negatively affect the process of change and social development. Based on the data of your documents and your acquired knowledge, write down a text: <ul style="list-style-type: none"> • Recalling two of these problems and showing their reflection on the types and forms of social mobility. • Specifying the concept resulting from these problems, and identifying two sides to support the change and two rejecting it. • Naming the appropriate political system for the process of change • Suggesting three measures that will solve these problems to develop the reality of youth. (4.25 pts.) 	4.25

Part 2: Second choice set- Studying a social subject (12 pts.)


Document:

Education is the social process by which the development of human personality in all its mental, psychological, social and physical aspects, in accordance with the standards of the prevailing community and values and trends and social roles formed in accordance with language and meanings and symbols. That education does not start at school but is a continuous process arises with the presence of human life and continue with him in the family and neighborhood and the district of civil society and society in general ... We cannot lose sight of the importance of the media in the modern era, so that it is considered one of the most important educational means, as it provides various scientific, cultural and social materials. Information on other cultural media is rapidly disseminating innovations in various fields and has a strong influence on public opinion and its composition and guidance in crucial issues of contemporary and important social issues.

المصدر: أسس التربية، التربية و الثقافة – امجد قاسم شباط 2011.

Education is still one of the most important foundations of personality building, despite the introduction of new factors that cannot be overlooked by the media and other modern communication institutions. Based on the document and your acquired knowledge, deal with the subject discussing the following ideas:

- Show the relationship between culture and values.
- Show the importance of values and the role of institutions to transfer values.
- Show 4 of the effects of modern means of communication on the general culture and values.
- Suggest two possible solutions to solve the problematic of cultural interaction with the wide diffusion of modern means of communication.

المادّة: علم الاجتماع الشهادة: الثانوية العامة الفرع: الاجتماع والاقتصاد نموذج رقم 2018 /3 المدة : ثلاث ساعات	الهيئة الأكاديمية المشتركة قسم الاجتماع والاقتصاد	 المركز التربوي للبحوث والإنماء
---	--	---

أسس التصحيح (تراعى تعليق الدروس والتوصيف المعدل للعام الدراسي 2016-2017 وحتى صدور المناهج المطوّرة)

Part 1: Obligatory Set- Using Concepts and Techniques (8 pts.)

1.	Developed countries: <ul style="list-style-type: none"> • The investment of young energies • Technical and technological development • The expansion of social services Developing countries: <ul style="list-style-type: none"> • The existence of a pressured agricultural sector • Population increase (0.25 pt. for every correct categorization; 0.25 pt. for the concept)			1
2.	The traditions and rituals of weddings within Lebanese families in old times	A study on the percentage of the usage of modern means of communication for direct communication between parents and friends in Lebanese society	To study the extent to which the use of smart tablets in the development of education in Lebanon and make it more an interactive education.	1.50
	The Historical Method (0.25 pt.)	The Statistical Method (0.25 pt.)	The Experimental Method (0.25 pt.)	
	Studying the growth and development of the phenomenon in time and place (0.25 pt.)	Providing definite numerical data (0.25 pt.)	Helping in studying a certain phenomenon in depth through a defined sample. Results can be generalized in case this experiment was crowned with success (0.25 pt.)	
3.	a. Because modern human development is enhanced through empowerment and participation by people and individuals in society. b. Because they are common features between the members of the same society / because it is one of the functions of values. c. Because the individual comes out of his narrow loyalties and his initial affiliation to integrate with others in social and voluntary work (0.50 pt. for each true justification)			1.50
4.	a. The geographical space and social relations. The geographical space (region / nature / countryside / city / mountainous area / desert or desert ...) where individuals and groups are located but affect the nature of relations between individuals in the community. <u>Example:</u> Some areas are linked to social ties and special relations Bedouin people are characterized by hospitality and fanaticism that connecting the sons of one tribe from the geographical space and promoting the survival instinct in difficult climatic conditions. (0.50 pt. for the relationship and 0.25 for the example) b. The development of socio-economic systems and social stratification.			1.50

	The economic and social systems vary and develop in time and place. The division of labor becomes more complex with the development of these systems. Thus, stratification systems vary according to the developments that affect the economic system. The developments that emerge on the economic system as a production system, is reflected in the social systems and the movement of the society as a whole and its stratification systems from one stage of formation to another. Hence, systems of stratification in feudal societies or modern class societies. (0.50 pt. for the relationship and 0.25 for the example)	
5.	<p>The causes of the spread of this phenomenon</p> <p>a. What do you think are the motives behind your children being subjected to domestic violence?</p> <ul style="list-style-type: none"> • Poverty / Difficult economic situation • Addiction • Psychological stress (3 alternatives are needed) (0.75 pt.) <p>b.</p> <ul style="list-style-type: none"> • The implications of the spread of this phenomenon (0.50 pt.) <p>In your opinion, how does family violence affect family cohesion? / How does the phenomenon of domestic violence affect the increase in social deviance?</p> <ul style="list-style-type: none"> • How to reduce them (0.50 pt.) <p>How can media organizations help lessen the spread of this dangerous phenomenon at the social level? (0.50 pt. for each question; The student can ask any other question provided that it is within the correct content and standards)</p> <p>c. The type of sample: The intended or chosen sample (0.25 pt.)</p> <p>Justification: A sample is chosen according to specific measures –families having their children being subjected to domestic violence- (0.50 pt.)</p>	2.50

Part 2: Optional Set- First choice set- Analyzing Documents (12 pts.)- Suggested Answers

1.	<p>a. Two of the reasons that hinder the process of social change: (0.50 pt.)</p> <ul style="list-style-type: none"> • Disruption of the role of woman or the high rate of illiteracy among women or the reduction of women's effectiveness and marginalization in the development process. • Strict system of social classes / class closures or class cohesion <p>b. The effect of culture on social change: (0.50 pt.)</p> <p>Traditional culture is an obstacle to social change. Or traditional culture based on customs, traditions and values in general, do not facilitate the process of social change.</p>	1
2.	<p>a. Two of the measures of social inequality in its socio-economic dimension:</p> <p><u>Differences in the guarantees and social benefits of workers:</u> Justification: There is an indication that 52% of workers in Lebanon are not officially recognized and their rights are not protected, and do not enjoy any of the rights of employment such as medicine, education and compensation.</p> <p><u>Class inequality or distribution of wealth:</u> Justification: There is an indication that the poor class exceeds 30% and 5% of the citizens hold 95% of the wealth.</p>	1.50

	<p><u>There is a variation in employment opportunities.,:</u> Women earn less than their male counterparts in the same jobs, and hundreds of employees leave their jobs without the state moving . (0.25 pt. for each dimension and 0.25 pt. for each indication)</p> <p>b. <u>The location of Lebanon in the path of social change + Proof:</u></p> <p>Lebanon remains a developing country with poor performance and a weak position among the Arab countries (tenth among 12 Arab countries/ 108 Among 131 countries) in terms of reducing inequality, social spending and labor market policies. (0.25 pt. for the location and 0.25 pt. for the proof)</p>	
3.	<p>a. <u>The prominent concept in the document:</u></p> <ul style="list-style-type: none"> • Sexual Inequality / Gender Discrimination (0.50 pt.) <p><u>Proof:</u> Unemployment rates between women and men through appropriate indicators The rates of unemployment among men and women are different, with women registering twice the rate of unemployment among men. On complementary level , the rate of unemployment among women is 11% and 4% for men, and in secondary level, the difference is also important for women (14% and 5% for men). (0.25 pt.)</p> <p>b. <u>The effect of the educational level on unemployment in Lebanon for both sexes + Extracting 2 appropriate proofs:</u></p> <p>The impact of education on unemployment rates among <u>men</u>: Unemployment rates remain at almost identical levels with the level of education in men, even slightly higher at the university level, which has no positive effect on the educational level (0.50 pt.). The significance of illiteracy is 5% and 5% at the secondary level. (0.25 pt.)</p> <p>The impact of the educational level on unemployment rates among <u>women</u>: Unemployment rates are high with the level of education in women up to secondary level, but it is slightly lower at the university level. Any adverse and negative impact (0.50 pt.) indicates an illiteracy rate of 4% and 5% at the secondary level. (0.25 pt.)</p>	2.25
4.	<p>a. <u>Type of change:</u> Natural Change A change in age and demographic structure due to emigration of the youth. <u>Proof:</u> 32% of the immigrants in the age group (25-29 years) and 28% in the age group (30-34 years), while the pyramid of ages in Lebanon, according to the Central Administration for Statistics shows that the young age group constitutes 38.1% of the Lebanese people, of whom 82.6% are immigrants. (0.25 pt.)</p> <p><u>Form of mobility:</u> Geographical mobility from home country to abroad. (0.25 pt.) <u>Proof:</u> Lebanon witnessed wars, security incidents and serious economic crises that caused a high percentage of immigrants. Or 35%, according to a poll conducted by International Information. (0.25 pt.)</p> <p>b. <u>Three categories are:</u> Young age group - university students - specialists, professionals and technicians. (0.75 pt.) <u>Their reflection on Lebanese society:</u> Emptying the community of its energies and human wealth and the owners of capital and specialized labor, as well as weakness of progress and development.... (0.25 pt.)</p>	2

5.	<p><u>The 2 missing condition of integration:</u></p> <ul style="list-style-type: none"> • Socio-Economic Condition (0.25 pt.) • Cultural-Educational Condition (0.25 pt.) 	0.50
6.	<p><u>The relationship between document 3 on the one hand and document 4 on the other hand:</u></p> <p>The high rates of unemployment among youth, especially degree holders and specialists (Document 3) prompted them to migrate in search of jobs and better life opportunities. (Document 4)</p>	0.50
7.	<ul style="list-style-type: none"> • Recalling two of these problems and showing their reflection on the types and forms of social mobility. <p>Social inequality - lack of services - unemployment - youth migration ...</p> <p><u>Its reflection on the types and forms of social mobility:</u> These problems hinder the mobility process, especially the professional and vertical upward, but push strongly towards the geographical mobility (0.75 pt.).</p> <ul style="list-style-type: none"> • Specifying the concept resulting from these problems, and identifying two sides to support the change and two rejecting it. <p><u>Concept:</u> Lack of Integration (0.50 pt.)</p> <p><u>Two sides supporting change:</u></p> <ul style="list-style-type: none"> • Youth • People of cities • Elites • Political parties • Unions / associations. (0.25 pt. for each / It is enough to mention two) <p><u>Two sides rejecting change:</u></p> <ul style="list-style-type: none"> • Elders • The rural population • Conservatives • The traditional political class. (0.25 pt. for each party rejecting the change / It is enough to mention two) <ul style="list-style-type: none"> • Naming the appropriate political system for the process of change <p>Democratic system (0.50 pt.)</p> <ul style="list-style-type: none"> • Suggesting three measures that will solve these problems to develop the reality of youth. <p>Creating job opportunities / Changing the educational system / Adopting the principle of efficiency and merit in recruitment and progress.(0.50 pt. for each correct measure)</p>	4.25

Part 2: Second choice set- Studying a social subject (12 pts.)

Suggested Answers

Introduction -Methodology (1.50 pts.)

The importance of the subject:

Education is a fundamental process in the building of the individual and society, and the social media play a major role, especially in the media and modern communication and its impact that has become direct on the individual and on the society in general. (0.5 pt.)

The time and place framework: (0.25 pt.)

	<p>Lebanese society in our time. <u>Problematic:</u> In light of the spread of modern means of communication and satellite channels, how can Lebanese culture enhance the role of local values and the role of institutions of internal values transfer or is the latter besieged (trapped) and marginalized and weaken its role in contemporary Lebanese society? (0.50 pt.) <u>Outline:</u></p> <ul style="list-style-type: none"> • Defining culture and values and the relationship between culture and values. • The importance of values and the role of institutions to transfer values. • 4 means of modern communication and their impact on public culture and values. • How to solve the problem of cultural interaction with the wide diffusion of modern means of communication and communication. (0.25 pt.) 	
	<p>Body Methodology (2 pts.)</p> <ul style="list-style-type: none"> • Defining culture and values and the relationship between them Culture is the composite, which includes the customs, traditions, custom and laws.... All that is acquired by the human being as a member of the community. Values are an expression of the goals or distant goals of the social actor. Values are not related to what is an object, but what should be in other words expressing some of the effective ethical motivations (0.25 to define values and culture). (0.25 pt.) From the culture of the community stems values and is a fundamental element of culture and its characteristics and the direction of individuals and groups in society (0.25 pt.) The importance of values and the role of institutions of values transfer <u>The importance of values:</u> The cohesion of models in society / Solidarity and social cohesion / The psychological unity of people (0.25 pt.) <u>The role of institutions of values transfer:</u> Institutions of transferring values from within are Family, school, neighborhood, religion, social and voluntary institutions. (0.50 pt.) Values from abroad are foreign missionaries / media / modern communication / trade / colonialism (0.50 pt.) • 4 means of modern communication and their impact on public culture and values. <ul style="list-style-type: none"> • The tendency to imitate the West by living styles (accessories, fast food, cosmetics) • The emergence of different aspects of social life, away from our acquired habits, such as family disintegration / the inclination of the Lebanese family to permanent consumption / the emergence of values far from our values and customs / Disintegration of social links (Enough to mention 4 of the effects) (0.50 / effect) • How to solve the problem of cultural interaction with the wide diffusion of modern means of communication <ul style="list-style-type: none"> • To develop the critical sense of the learners • To spread the characteristics of our society through social networking sites • To promote cultural festivals to preserve the national culture • To raise awareness about the mucus of imported values, especially the values of consumption and others. (Enough to mention 4 solutions) (0.50 / solution) 	
	<p>Conclusion Methodology (0.50 pt.)</p> <ul style="list-style-type: none"> • Summary and answering the problematic The Lebanese society and local values are facing a crisis in light of the technological developments in terms of changing values and the identity of Lebanese society, which 	

	<p>must be preserved through the roles that can be played by the family, the school, the Lebanese media and other social and educational institutions concerned. (1 pt.)</p>	
--	--	--

- **Opening new horizons**

With the rapid technological development, will traditional structures be able to withstand this social and intellectual invasion of our society?, and what role can civil society organizations and NGOs play in confronting this new reality? (0.50 pt.)